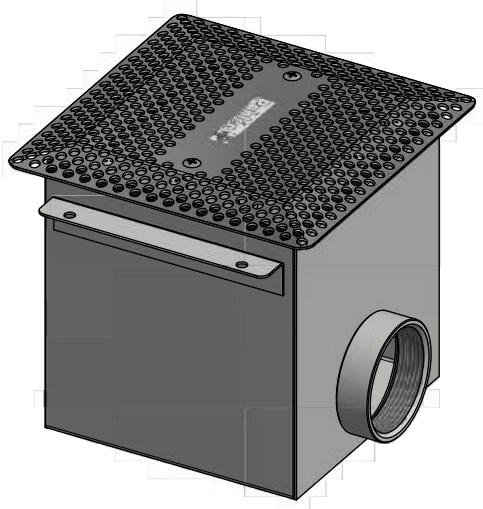




User manual

Main drain



Technical specifications: Max. flow capacity: 20 m³/h

Place the drain according to the instructions from your pool supplier.

If the drain is placed in the bottom of the a pool with liner and a floor of sand the drain must be fixed with concrete.

NOTE! Minimum distance between stainless steel material and non-stainless (e.g. Concrete-reinforcing bars) will be 50 mm.

between them (for safety reasons).

Mount the drain flange in line with the finished pool layer, se picture1.

Mount the self-adhesive gasket on the drain flange. After the liner is in place,

As additional accessories there are clamps (item no. 112900) to stabilize the

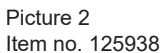
entry. Use suitable thread sealing.

For swimming pools with liner and sand bottom the drain must be fixed with concrete

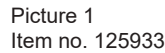
Mount the drain flange in line with the finished pool layer.

Place the drain in the mould and cast.

Mount the grille afterwards.



12. Non leak flange



Chlorine content:	max 3.5 mg/l
Chloride (salt) content:	max 250 mg/l
pH-value:	7.2–7.6
Alkalinity:	60–120 mg/l (ppm)
Calcium hardness:	100–300 mg/l (ppm)
Iron:	max 0.1 mg/l *
Copper:	max 0.2 mg/l *
Manganese:	max 0.05 mg/l *
Phosphorus:	max 0.01 mg/l *
Nitrate:	max 50 mg/l*

Outside these values the product warranty does not apply.